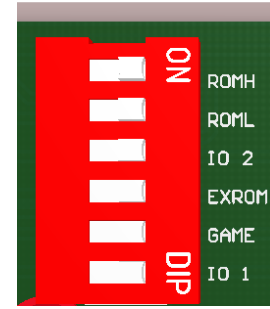
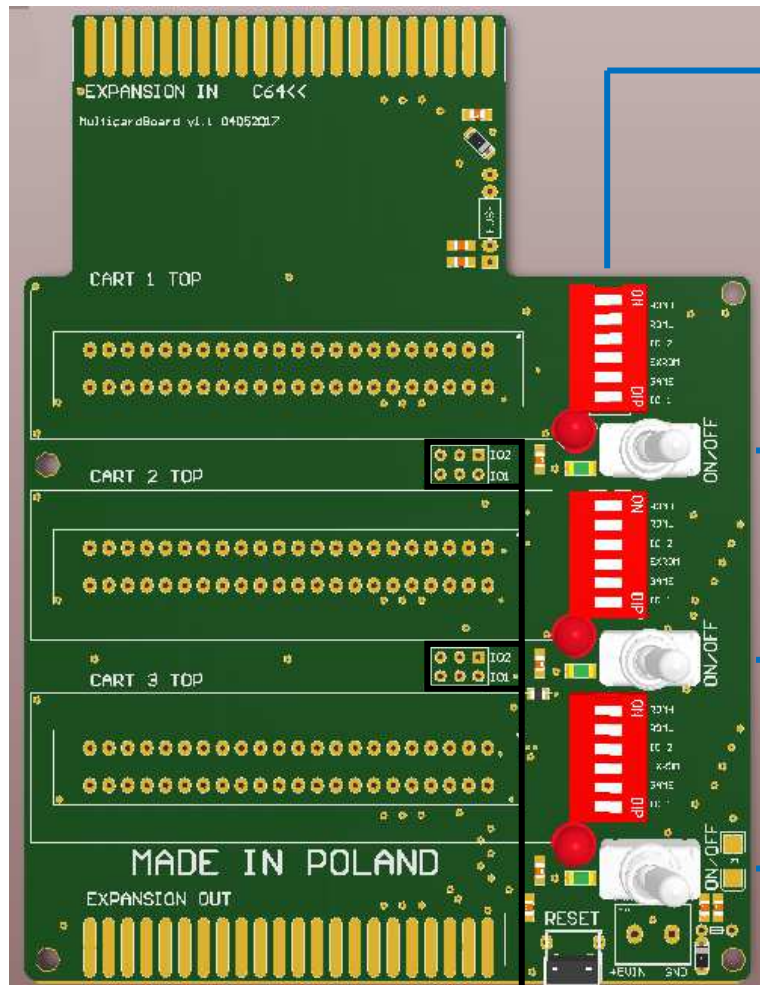


Mini Manual for Cartridge Expander C64/C128 v1.1



You can very easy just disconnect or connect these control lines for each cartridge independently (CART1, CART2, CART3).

Just switch power on/off for CART1, CART2 and CART3

All lines from cartridge port C64/C128.

You can cross signals IO1 and IO2 for CART1 and CART2.

Reset button for C64/C128.

Input for external power source because from cartridge port C64 you can take only 450mA (it also depends what type of power supply for c64 you have and version of the c64). Please use only 5V DC.